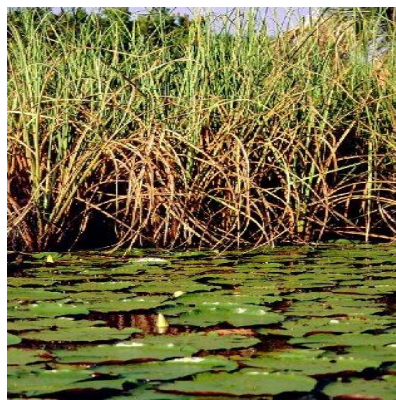
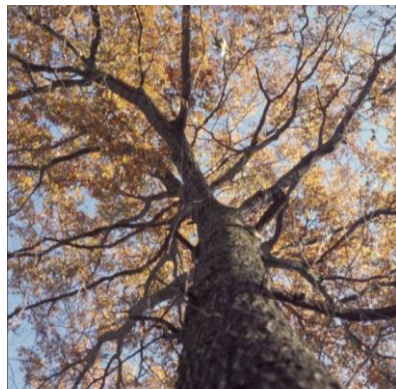


Plants, People, and Climate in North America

Geography 439 Spring 2016 Professor Sally Horn

MWF 12:20-1:10 in 401 BGB



The amazing diversity of plants and plant cover on our planet gives character to landscapes and provides habitat and resources for both wildlife and humans. The nature and distribution of vegetation types is influenced by climate, soils, terrain, fire, and other natural and human disturbances along with biological processes. In Geography 439 we'll travel from the tundra of the Canadian Arctic to the rainforests of Panama, with a side trip to Caribbean islands, to examine the past and present distributions, characteristics, and determinants of the major plant communities of North America—with a focus on climate and humans as major influences. We'll also consider management and conservation issues. Geography 439 fulfills requirements for majors in Geography, Biological Sciences, Forestry, and Environmental and Soil Science, but is open to undergraduates in all majors and to graduate students (graded separately from undergrads). The recommended background is Geography 131 or similar, or coursework in botany or ecology.